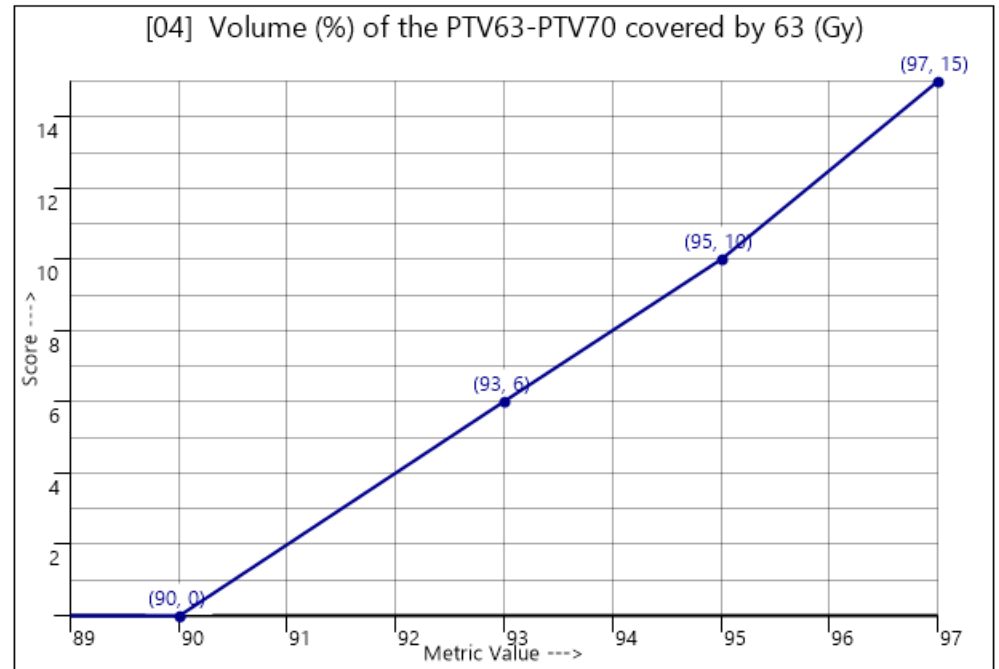
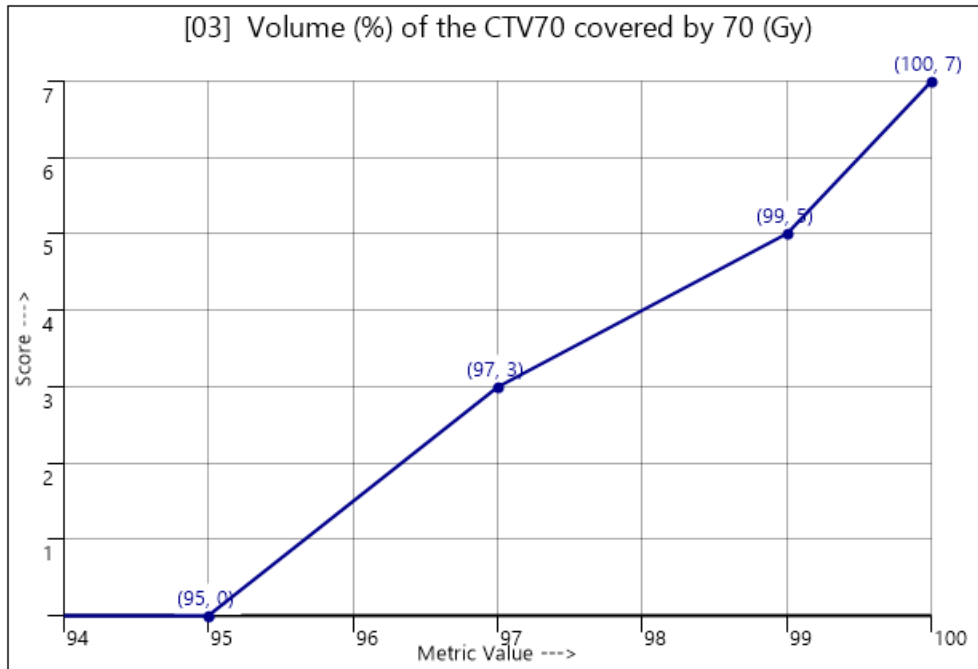
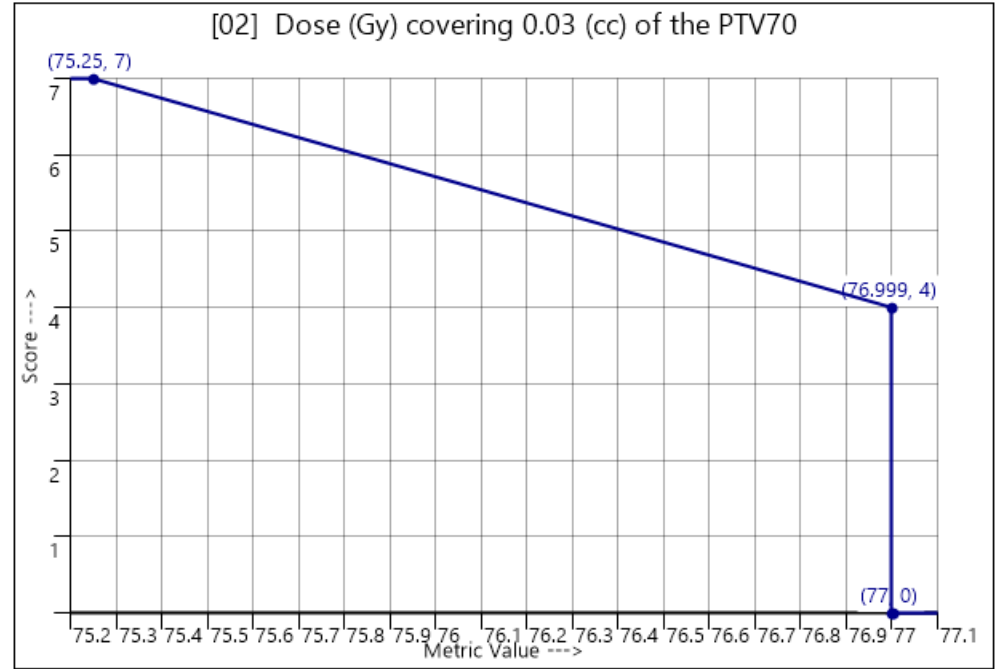
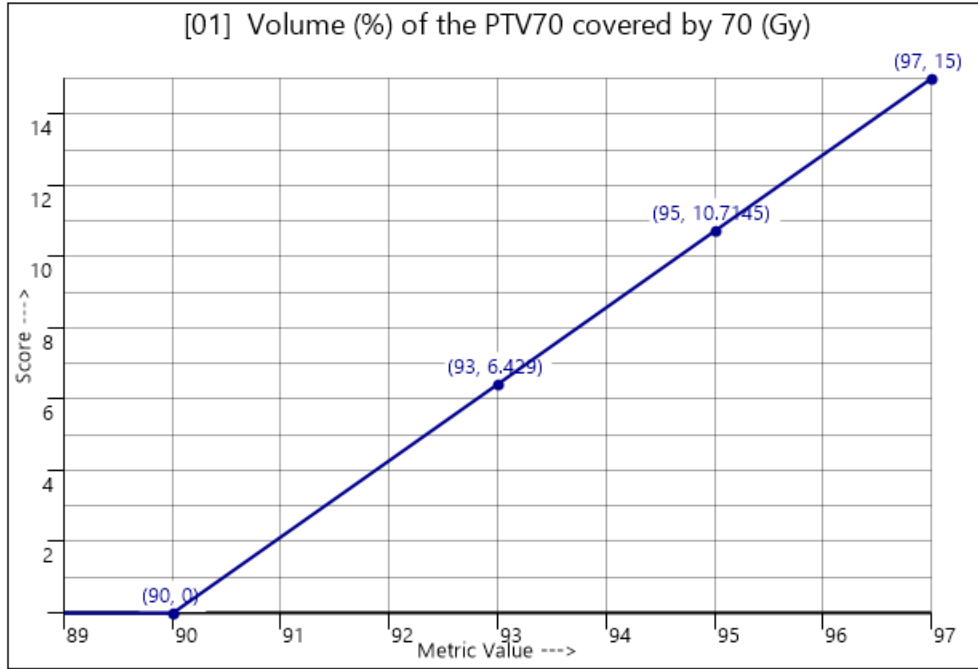
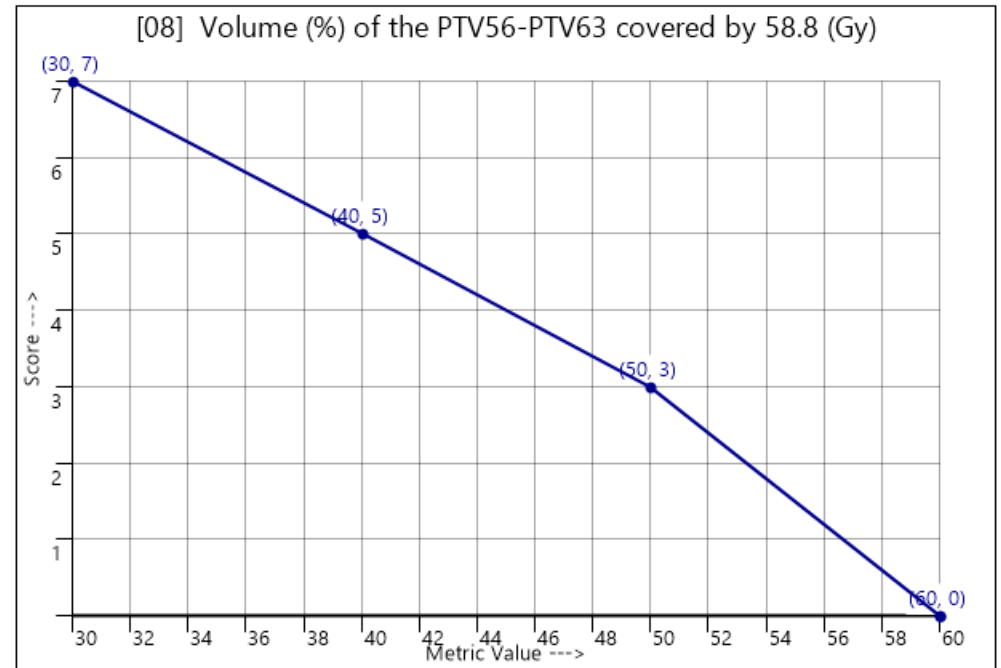
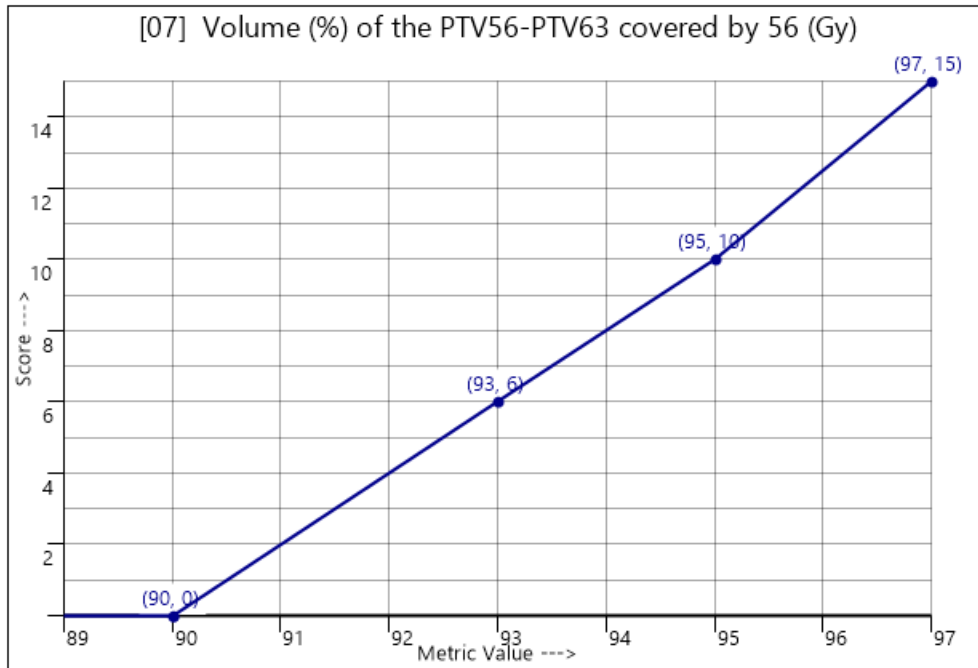
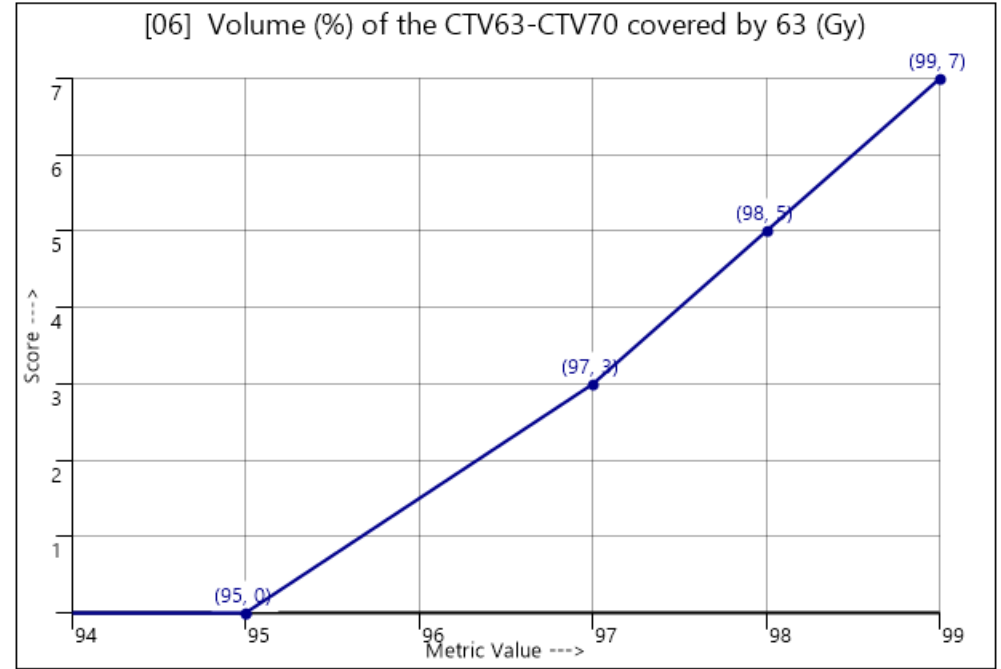
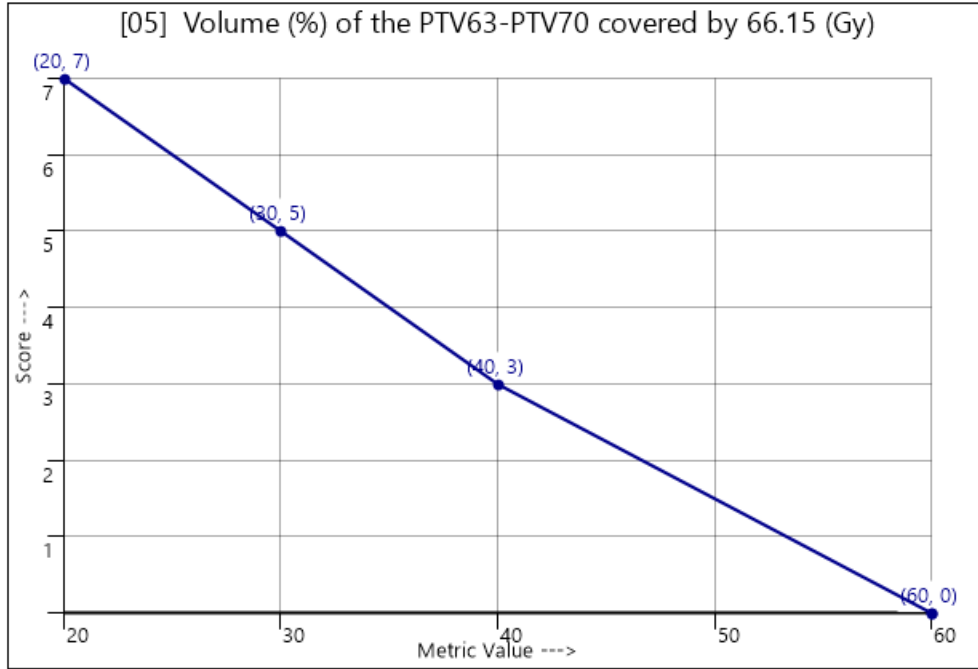
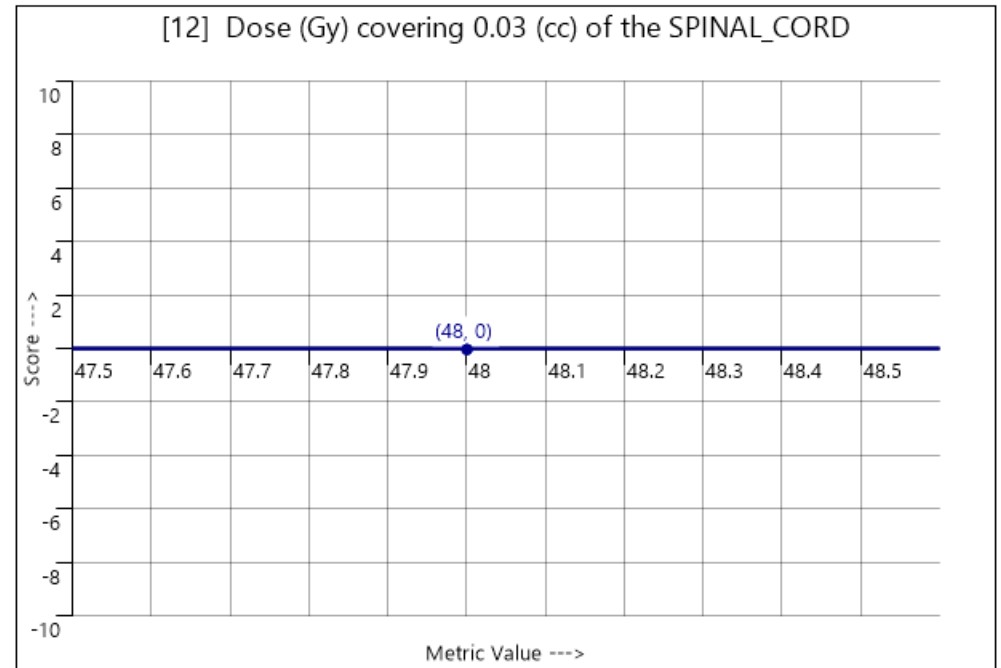
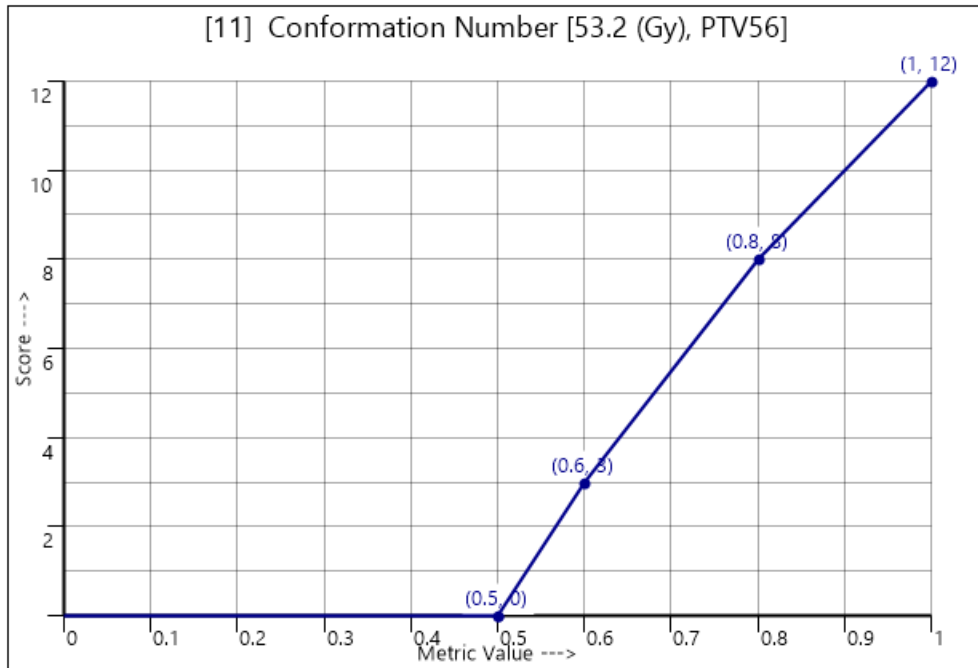
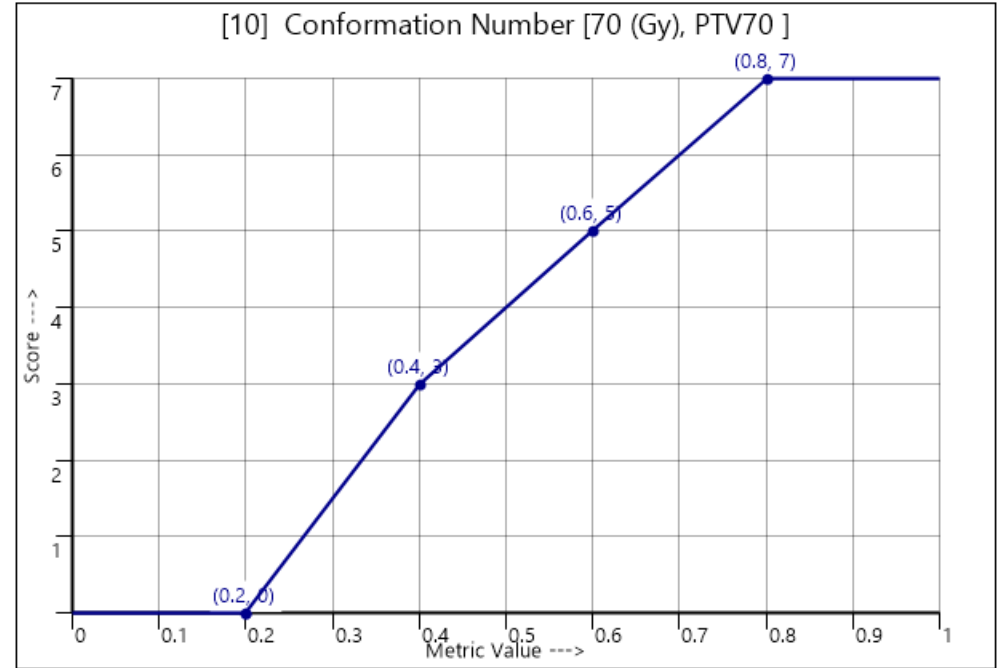
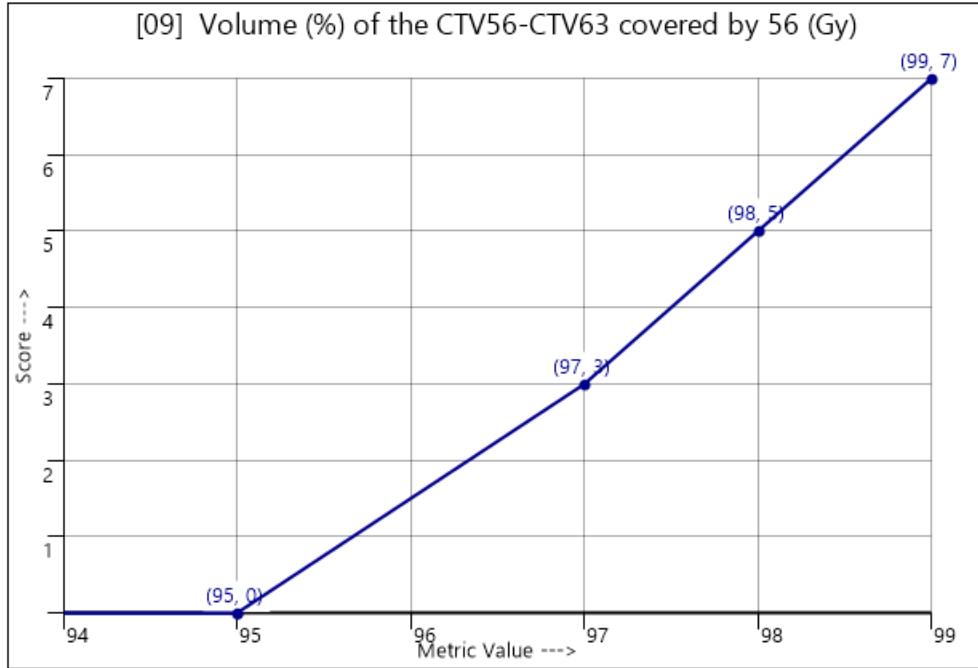


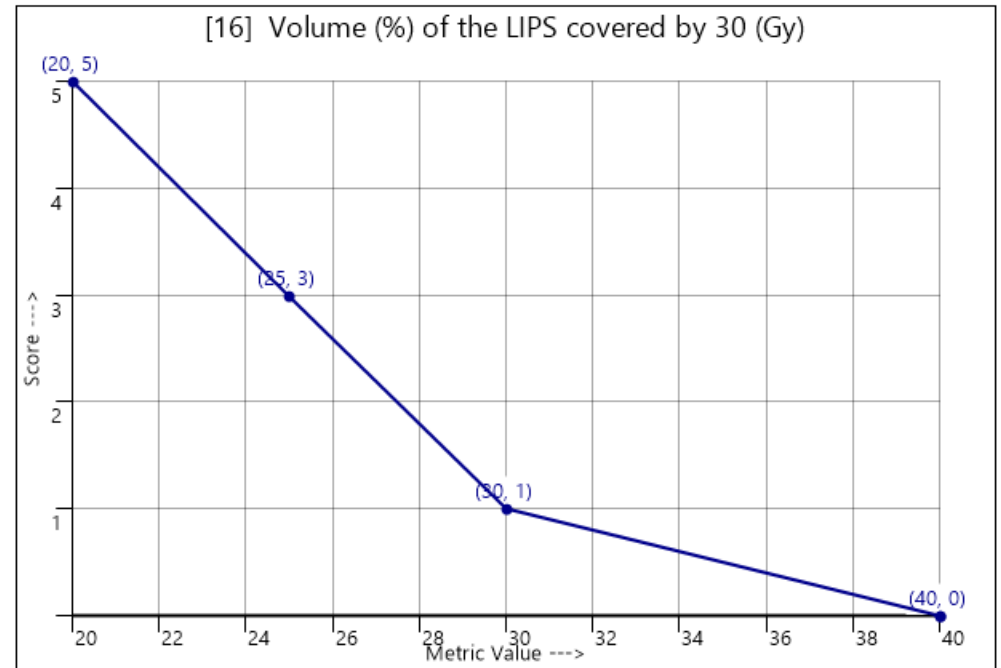
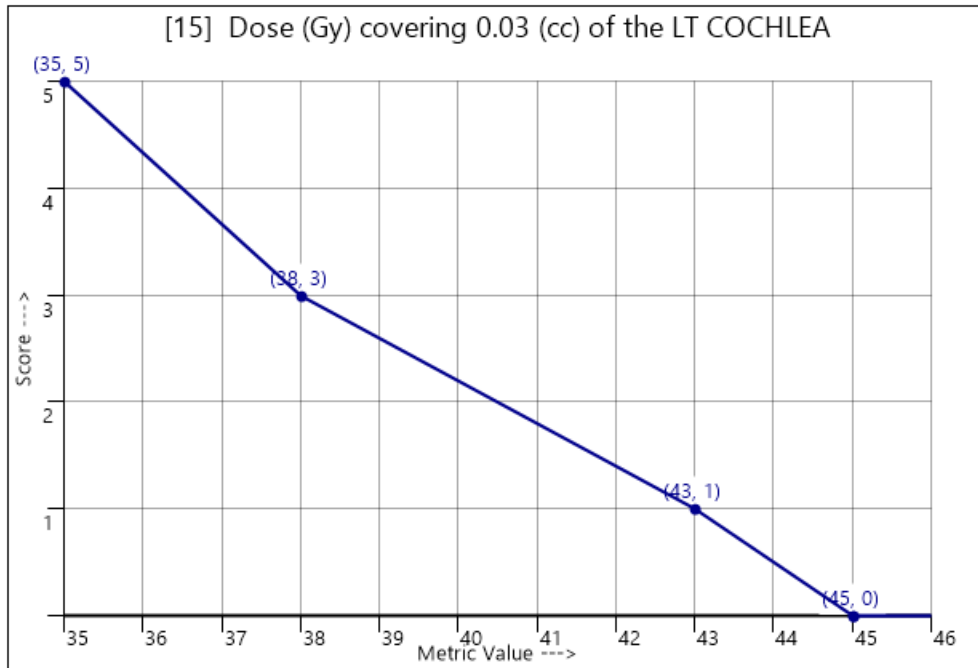
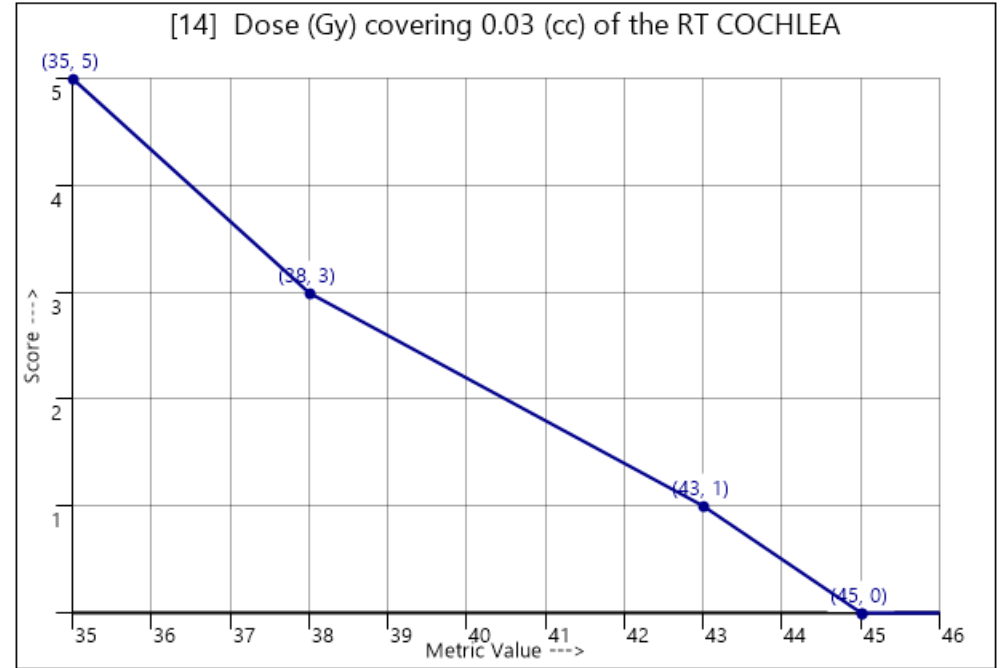
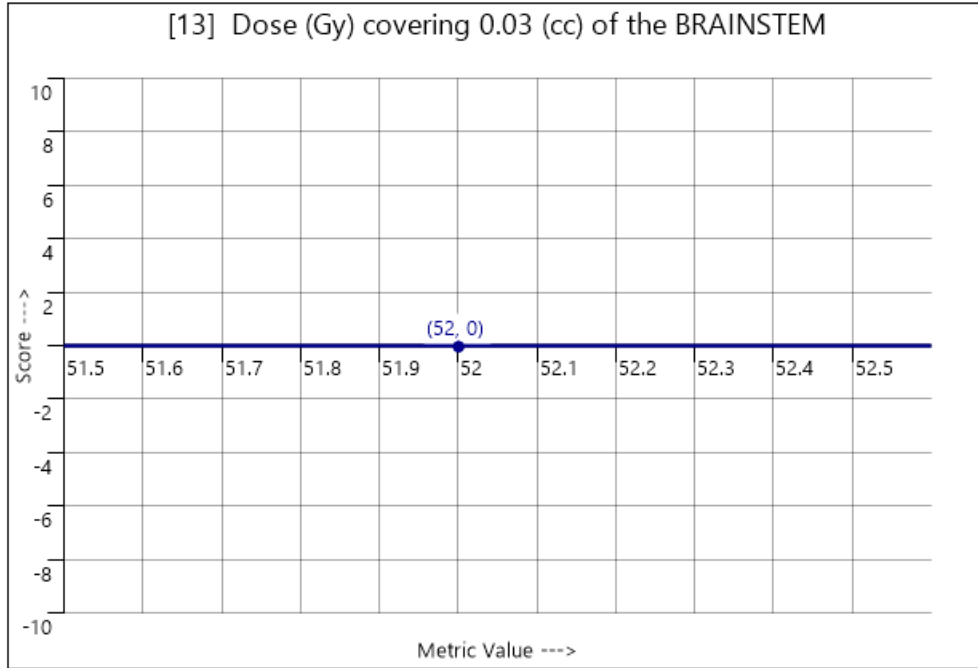
HN 70 Gy, 63 Gy, 56 Gy; 35 fractions SIB

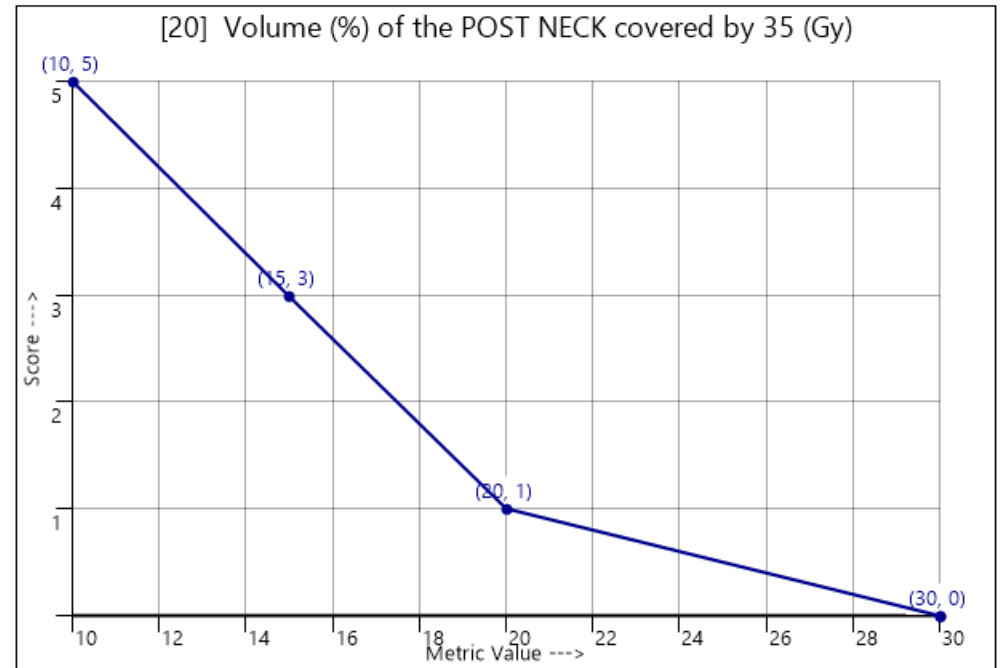
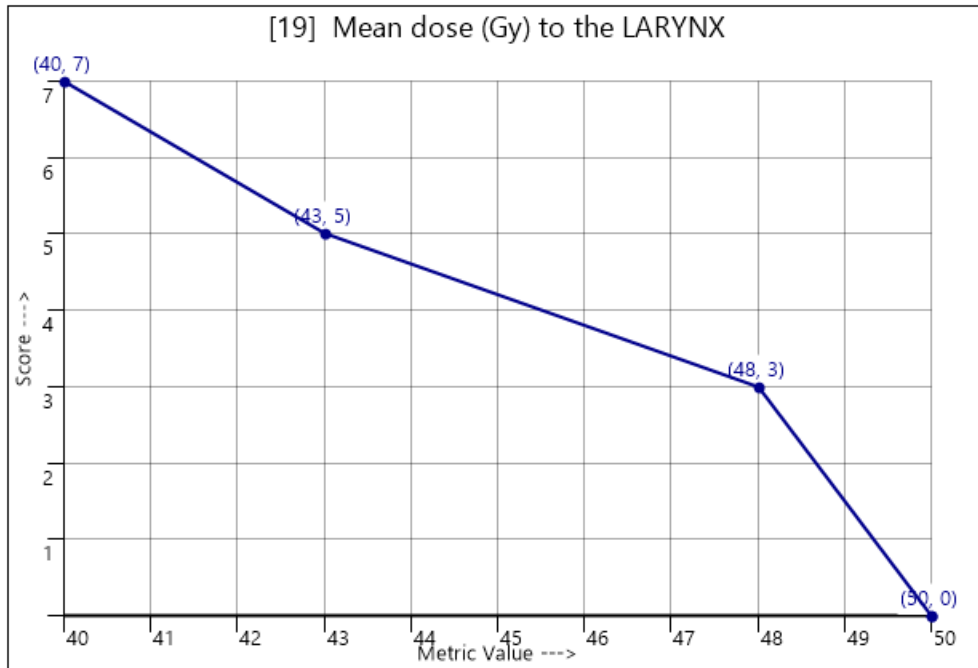
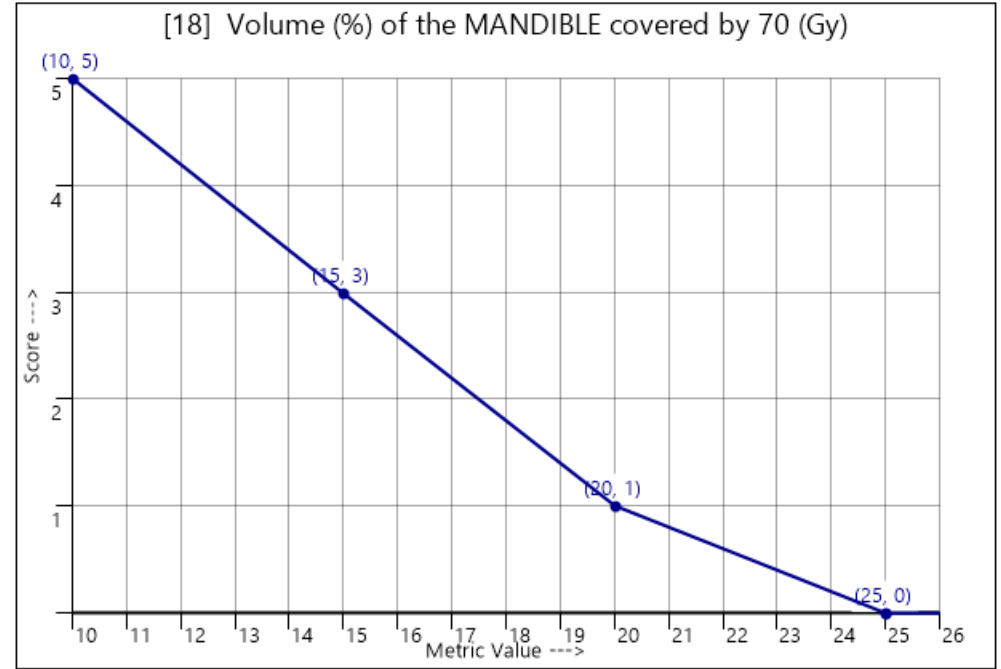
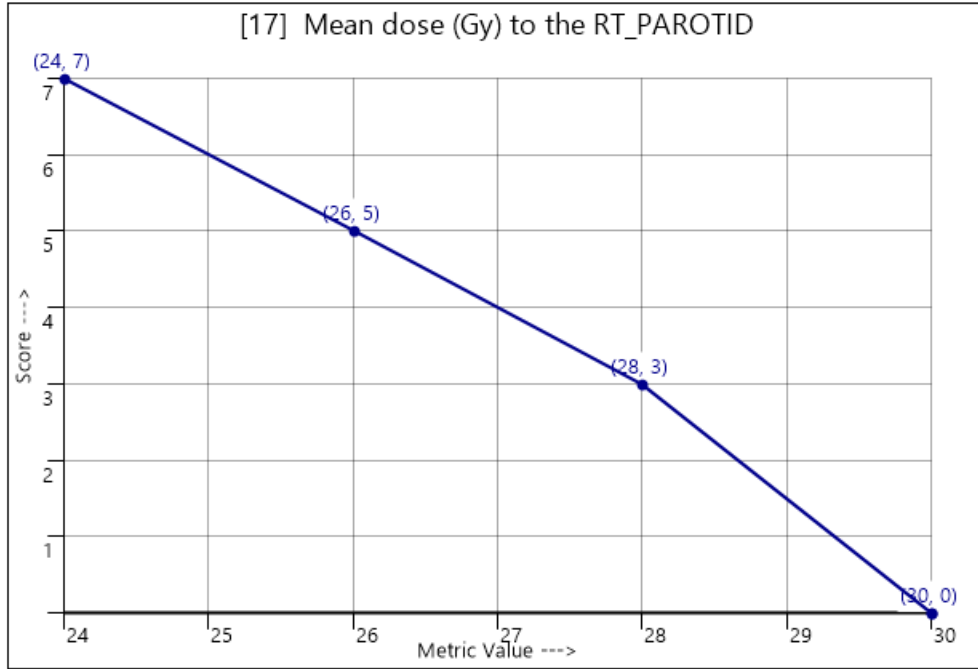
#	METRIC ID (23 Total Metrics)	WEIGHT (150)	PERFORMANCE BINS					
[01]	Volume (%) of the PTV70 covered by 70 (Gy)	15	< 90 UNACCEPTABLE	90 MARGINAL	93 ACCEPTABLE	95 GOOD	97 IDEAL	
[02]	Dose (Gy) covering 0.03 (cc) of the PTV70	7	> 77 UNACCEPTABLE	76.999 ACCEPTABLE			75.25 IDEAL	
[03]	Volume (%) of the CTV70 covered by 70 (Gy)	7	< 95 UNACCEPTABLE	95 MARGINAL	97 ACCEPTABLE	99 GOOD	100 IDEAL	
[04]	Volume (%) of the PTV63-PTV70 covered by 63 (Gy)	15	< 90 UNACCEPTABLE	90 MARGINAL	93 ACCEPTABLE	95 GOOD	97 IDEAL	
[05]	Volume (%) of the PTV63-PTV70 covered by 66.15 (Gy)	7	> 60 UNACCEPTABLE	60 MARGINAL	40 ACCEPTABLE	30 GOOD	20 IDEAL	
[06]	Volume (%) of the CTV63-CTV70 covered by 63 (Gy)	7	< 95 UNACCEPTABLE	95 MARGINAL	97 ACCEPTABLE	98 GOOD	99 IDEAL	
[07]	Volume (%) of the PTV56-PTV63 covered by 56 (Gy)	15	< 90 UNACCEPTABLE	90 MARGINAL	93 ACCEPTABLE	95 GOOD	97 IDEAL	
[08]	Volume (%) of the PTV56-PTV63 covered by 58.8 (Gy)	7	> 60 UNACCEPTABLE	60 MARGINAL	50 ACCEPTABLE	40 GOOD	30 IDEAL	
[09]	Volume (%) of the CTV56-CTV63 covered by 56 (Gy)	7	< 95 UNACCEPTABLE	95 MARGINAL	97 ACCEPTABLE	98 GOOD	99 IDEAL	
[10]	Conformation Number [70 (Gy), PTV70]	7	< 0.2 UNACCEPTABLE	0.2 MARGINAL	0.4 ACCEPTABLE	0.6 GOOD	0.8 IDEAL	
[11]	Conformation Number [53.2 (Gy), PTV56]	12	< 0.5 UNACCEPTABLE	0.5 MARGINAL	0.6 ACCEPTABLE	0.8 GOOD	1 IDEAL	
[12]	[CRITICAL] Dose (Gy) covering 0.03 (cc) of the SPINAL_CORD	0	> 48 FAIL					48 PASS
[13]	[CRITICAL] Dose (Gy) covering 0.03 (cc) of the BRAINSTEM	0	> 52 FAIL					52 PASS
[14]	Dose (Gy) covering 0.03 (cc) of the RT COCHLEA	5	> 45 UNACCEPTABLE	45 MARGINAL	43 ACCEPTABLE	38 GOOD	35 IDEAL	
[15]	Dose (Gy) covering 0.03 (cc) of the LT COCHLEA	5	> 45 UNACCEPTABLE	45 MARGINAL	43 ACCEPTABLE	38 GOOD	35 IDEAL	
[16]	Volume (%) of the LIPS covered by 30 (Gy)	5	> 40 UNACCEPTABLE	40 MARGINAL	30 ACCEPTABLE	25 GOOD	20 IDEAL	
[17]	Mean dose (Gy) to the RT_PAROTID	7	> 30 UNACCEPTABLE	30 MARGINAL	28 ACCEPTABLE	26 GOOD	24 IDEAL	
[18]	Volume (%) of the MANDIBLE covered by 70 (Gy)	5	> 25 UNACCEPTABLE	25 MARGINAL	20 ACCEPTABLE	15 GOOD	10 IDEAL	
[19]	Mean dose (Gy) to the LARYNX	7	> 50 UNACCEPTABLE	50 MARGINAL	48 ACCEPTABLE	43 GOOD	40 IDEAL	
[20]	Volume (%) of the POST NECK covered by 35 (Gy)	5	> 30 UNACCEPTABLE	30 MARGINAL	20 ACCEPTABLE	15 GOOD	10 IDEAL	
[21]	Structure(s) containing the global max dose point	5	ELSEWHERE MARGINAL			CTV70 IDEAL		
[22]	Cumulative meterset over all treatment beams	---	Unscored metric and/or performance bins are not defined.					
[23]	Estimated 'beam-on' time, all beams (minutes)	---	Unscored metric and/or performance bins are not defined.					

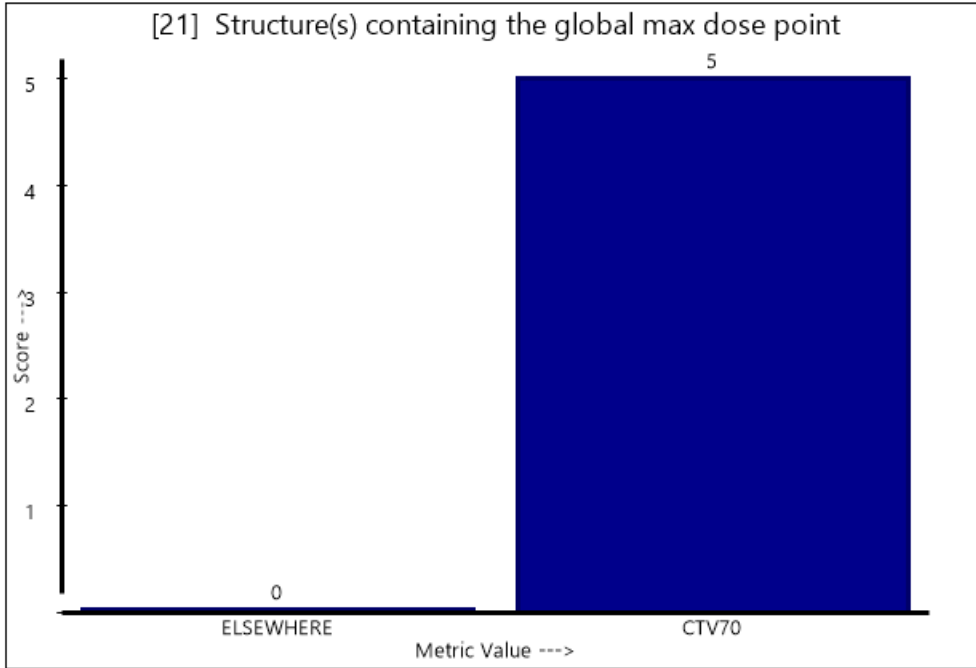












[22] Cumulative meterset over all treatment beams

Metric 22: Unscored Metric (no metric objective defined)

[23] Estimated 'beam-on' time, all beams (minutes)

Metric 23: Unscored Metric (no metric objective defined)